



ARTISTIC REPRESENTATION
METROPOLITAN SERIES



THE BELMONT II

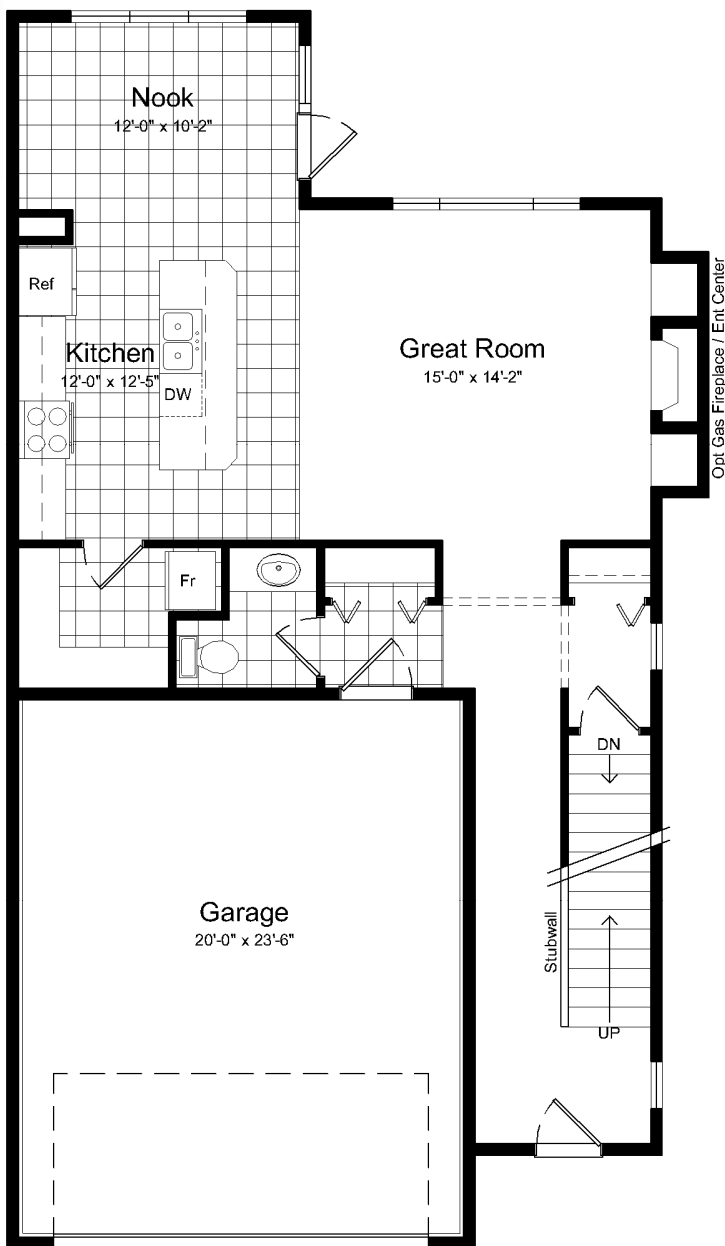
1916 SQ. FT.
27'-6" WIDE
4 BEDROOMS – 2.5 BATHS
OPEN CONCEPT LAYOUT
2 – STOREY FOYER
ENERGY STAR CERTIFIED CONSTRUCTION

1. FOR MORE INFO

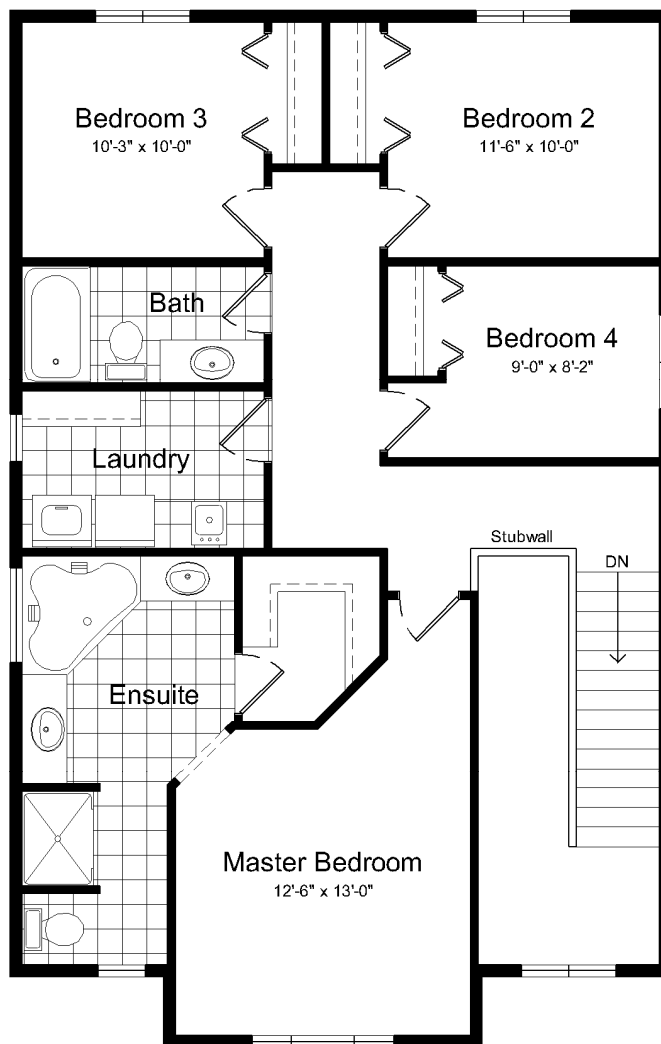
Century West Homes
Ph: 306.522.1062
www.centurywesthomes.com



THE BELMONT II



Main Floor
872 Sq. Ft.



Upper Floor
1044 Sq. Ft.

Contact your Century West Homes representative for pricing and available upgrade information

Century West Homes is committed to innovative design and continued product research; therefore, plans and specifications are subject to change without notice. This plan is published by Century West homes Ltd. Dimensions shown are approximate. Reproduction of this plan in whole or in part, in any form, is prohibited without permission of Century West Homes Ltd.