



ARTISTIC REPRESENTATION



## 4810 UPSON ROAD – THE CRANSTON

2028 SQ. FT.

3 BEDROOMS – 2.5 BATHS

BONUS ROOM

OPEN CONCEPT LAYOUT

FINISHED BASEMENT WITH HOME THEATRE SYSTEM

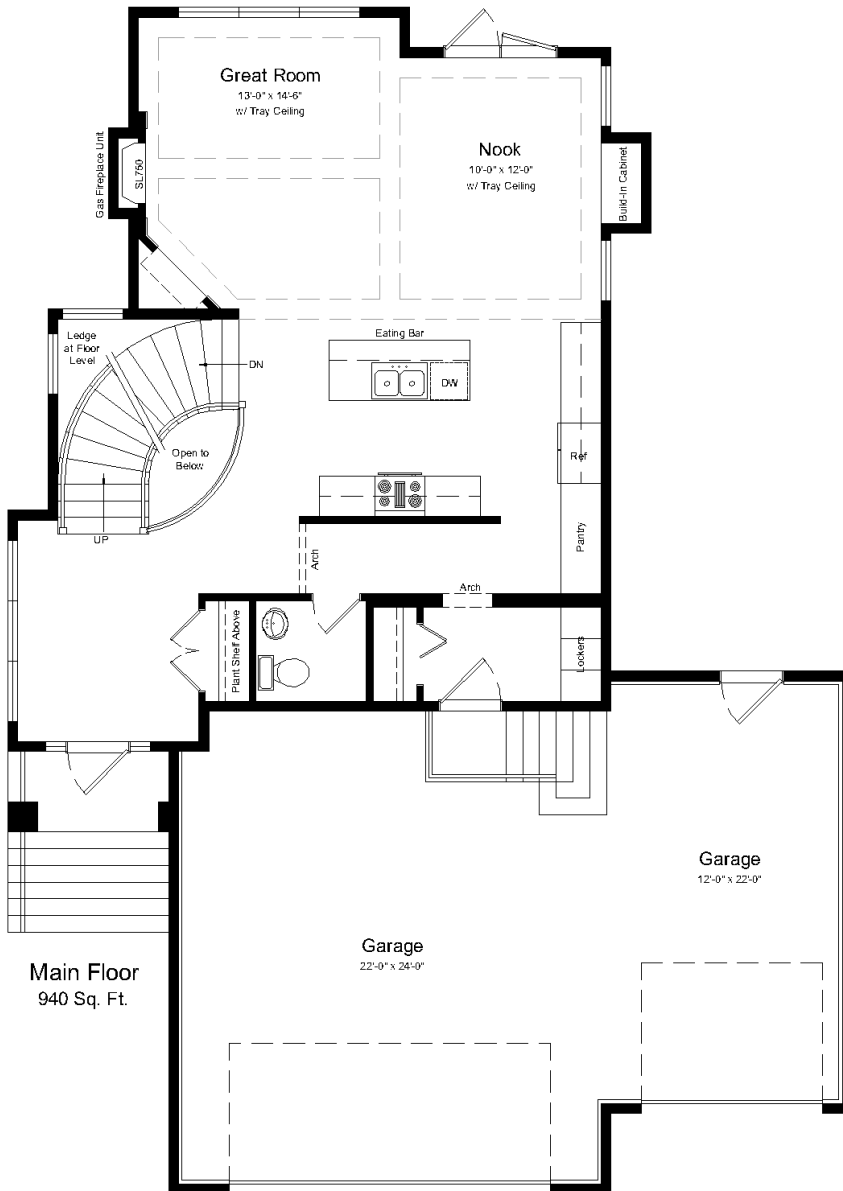
ENERGY STAR CERTIFIED

### 1. FOR MORE INFO

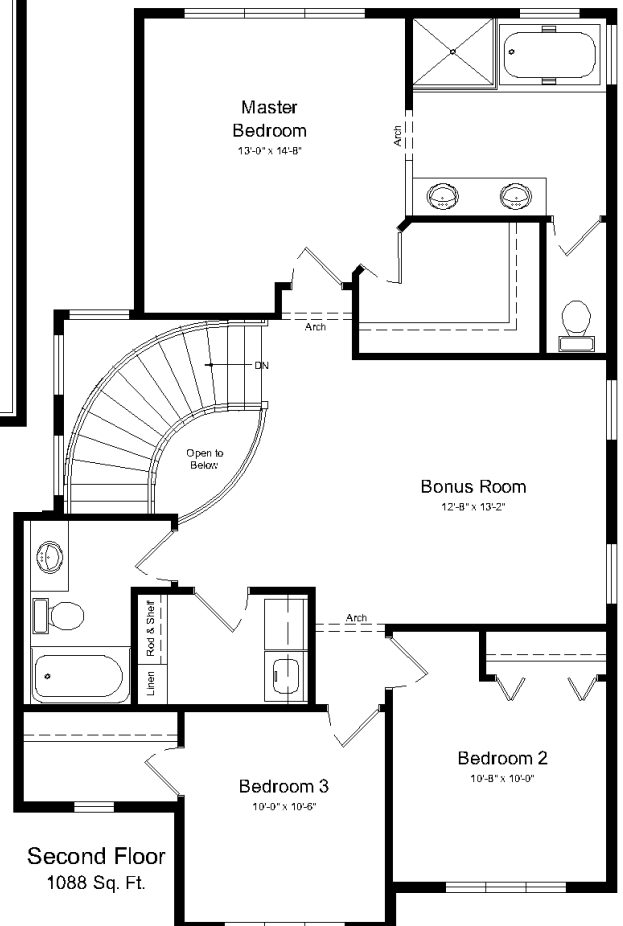
Century West Homes  
Ph: 306.522.1062  
[www.centurywesthomes.com](http://www.centurywesthomes.com)



# 4810 UPSON ROAD – THE CRANSTON



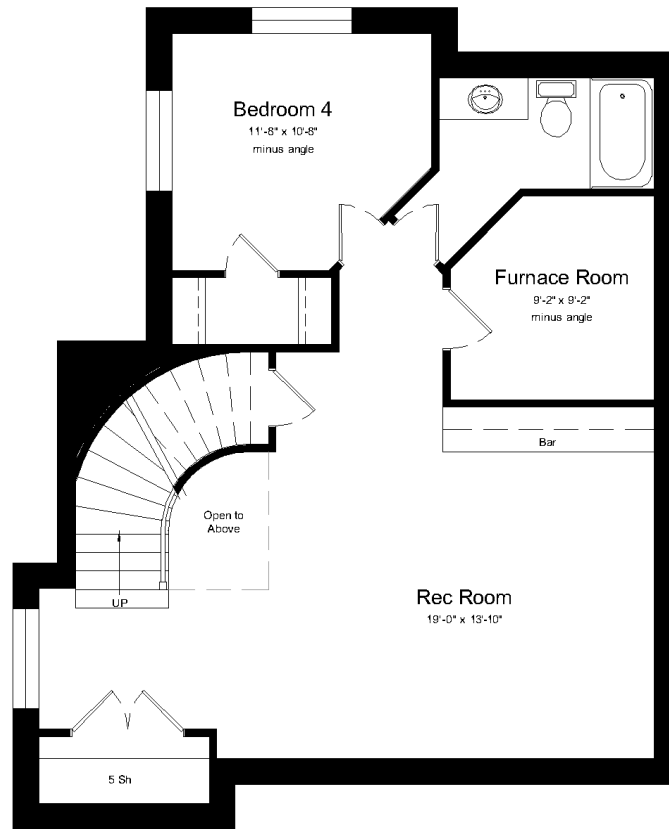
Main Floor  
940 Sq. Ft.



Second Floor  
1088 Sq. Ft.

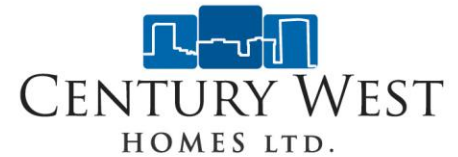
Contact your Century West Homes representative for upgrade options and pricing information

# 4810 UPSON ROAD – THE CRANSTON



**Finished Basement**  
715 Sq. Ft.

# 4810 UPSON ROAD – THE CRANSTON



## The Cranston Showhome Features:

Acrylic Stucco with Hardi-Board & Brick Accents  
Engineered Pile Construction  
9 Foot Basement Ceilings  
Professional Landscaping in Front Yard  
Pressure Treated Deck with Aluminum Railing  
Hardwood, Ceramic Tile & Premium Carpet Throughout  
Custom Tile Mosaic at Entry  
Mirrored Closet Doors at Entry  
Custom Curved Oak Staircase with Metal Spindles  
Custom Tray Ceilings & Bulkheads in Great Room & Nook  
Crown Molding Throughout Main Floor  
Kitchen Craft Integra Series Cabinets with Hand Scraped Finish  
Solid Surface Quartz Countertops with Ceramic Tile Backsplashes  
Built-In China Cabinet with Wine Cooler  
Stainless Steel Undermount Kitchen Sink with Pullout Faucet  
Kohler Forte Faucets Throughout  
Hytec "Caracus" Drop-in Tub with Jet package  
Custom Tiled Ensuite Shower  
In-floor Heat Mats in Ensuite Floor and Shower  
Custom Closet Systems by Clutter-X  
Custom Oak Locker Unit  
Heat & Glo Fireplace Unit with Quartz Hearth & Custom Corner Shelf Unit  
Electrolux Icon Stainless Steel Appliance Package  
Samsung Front Load Laundry Team  
Finished Central Vac  
Finished Basement with Rumpus Room, Bar, Bedroom & 4 Piece Bathroom  
Fully Finished Triple Car Garage with Unit Heater  
Home Automation Platform from Savant AV – Includes Lighting & Heating Integration  
Home Theatre Package in Basement